

# SciCan HYDRIM C61WD G4 Quick Reference Guide

Operator's Manual should be consulted before using this washer disinfectant.

## BASIC OPERATION

1 Power on the unit.



The button is inside the kick plate.

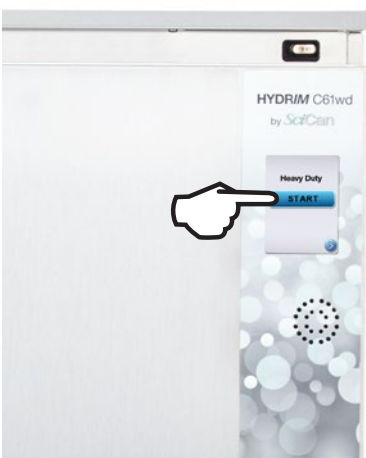
2 Load Instruments and close the door.



3 Select cycle.



4 Press START.



### Touchscreen



**Rinse and Hold Cycle**  
Prevents soil from drying on instruments.  
Incomplete loads that will not be washed within the hour.  
NOT a cleaning and disinfection cycle.



**Heavy Duty Cycle with Disinfection**  
Heavily soiled instruments and cassettes.



Door Lock



User/Technician Menu



Network Connection



USB



Water Softener/  
Detergent  
Level/Door  
Status

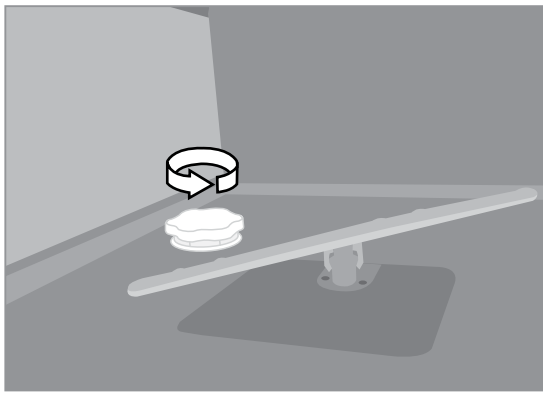


Enter



Back

## Refilling the Water Softener Salt Reservoir



1. Unscrew lid.
2. Fill to the top (max. 0.5 kg / 1.1 lbs.)
3. Screw lid on tightly.
4. Run a complete cycle, with no instruments.

**IMPORTANT!**  
If the salt container is being filled for the first time, it MUST be filled with at least 1 litre of water before adding the salt.  
Only tablet salt should be used in the softening unit. Fine grained salt such as table salt should NOT be used as it could clog the unit.  
If salt was spilled while refilling, run a cleaning cycle. The water softener salt is also available from SciCan.  
Please contact your local dealer.

## Cleaning the Chamber

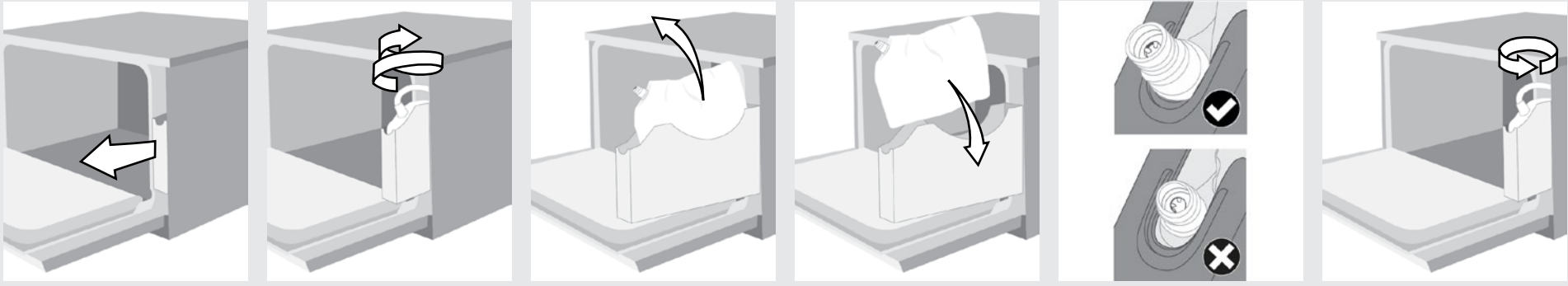
Pour 0.5L of vinegar or citric acid-based instrument neutralizer into the chamber and follow these steps:



**IMPORTANT! Do a Chamber Cleaning cycle every 25 cycles. Failure to clean the chamber can promote corrosion.**

## Replacing the HIP Cleaning Solution

Check your Operator's Manual for more details.



**Recommended precautionary measures with regard to safe handling of HIP solution:**

- Wear undamaged surgical gloves and eye protection.
- After handling the product, remove and dispose of the gloves and wash hands prior to removing eye protection.

## TROUBLESHOOTING

Refer to Operator's Manual for a more comprehensive list. Call for service if suggested recommendations do not resolve the error message.

|                              |   |
|------------------------------|---|
| CF2 Chamber Filling Failure  | Check that the water hoses are not kinked<br>Check that the water shut-off valves are opened              |
| CF 40 Upper Wash Arm Stopped | Check for obstructions to rotation of upper wash arm<br>Check that the holes in wash arms are not plugged |
| CF 41 Lower Wash Arm Stopped | Check for obstructions to rotation of lower wash arm<br>Check that the holes in wash arms are not plugged |
| CF 42 Upper Wash Arm low RPM | Check for obstructions to rotation of upper wash arm<br>Check that the holes in wash arms are not plugged |
| CF 41 Lower Wash Arm low RPM | Check for obstructions to rotation of lower wash arm<br>Check that the holes in wash arms are not plugged |

### Spare Parts and Accessories

|            |   |
|------------|---|
| CS-HIPC-U  | HIP- Ultra Cleaning Solution (8 x 750 mL) |
| 01-112594S | Water Softener Salt                       |
| 01-108305S | Water Test Kit                            |
| 01-114390S | HEPA Filter                               |



Terminal sterilisation of instruments **MUST** follow processing in the HYDRIM C61WD G4.

### IMPORTANT!

For non-invasive medical devices, we recommend terminal sterilisation after processing in the HYDRIM C61WD G4 according to local guidelines. For invasive medical devices, such as dental handpieces, terminal sterilisation must be performed after processing in the HYDRIM C61WD G4.